

# Scale Drawing Worksheets

1. A tree is 54 meters high. George used a scale of 1 inch : 9 meters to draw the picture of the tree. Find the height of the tree in George's picture.

- a.  6 inches
- b.  54 inches
- c.  6 meters
- d.  8 meters

2. An artist drew a sketch of the Eiffel Tower and it measured 80 cm in height. Find the scale used, if the actual height of the tower is 320 m.

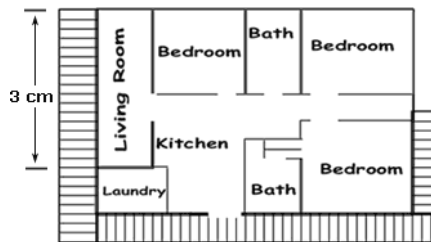
- a.  4 m : 1 cm
- b.  1 cm : 4 m
- c.  1 cm : 2 m
- d.  1 cm : 8 m

3. A lamp post measures 5 cm long in a picture. Find the actual height of the lamp post using a scale of 1 cm : 4 ft.

- a.  1.25 ft
- b.  20 ft
- c.  20 cm
- d.  25 ft

4. The figure shows the layout of a house. If the actual length of the living room is 12 ft, find the scale used to draw the layout.

- a.  1 cm : 4 ft
- b.  1 cm : 5 ft
- c.  4 cm : 1 ft
- d.  1 in. : 4 ft



5. A drawing of a table has a scale of 1 inch equal to 3 feet. Find the actual length of the table, if the length of the table in the scale drawing is 4 inches.

- a.  34 feet
- b.  18 feet
- c.  12 feet
- d.  4 feet

6. Jim is preparing a map. His school is 4 miles from his house. If he uses a scale of 1 inch : 0.5 mile, then what is the distance between his school and his house on the map?

- a.  2 inches
- b.  20 inches
- c.  4 inches
- d.  8 inches

7. A map was scaled such that one inch equals 120 miles. If Boone and Ashton are  $\frac{4}{3}$  inches apart on the map, then what is the actual distance between them?

- a.  160 miles
- b.  90 miles
- c.  480 miles
- d.  30 miles

8. The scale used in a map is 2 in. : 3 ft. Find the actual height of a bridge, if it measures 2 in. on the map.

- a.  3 ft
- b.  2 ft
- c.  4 ft
- d.  5 ft

9. An artist used a scale of 1 in. : 3 m to draw a chapel. If the chapel measured 12 in. in his sketch, find the actual height of the chapel.

- a.  37 m
- b.  35 m
- c.  38 m
- d.  36 m

10. Jerald has a book, which contains pictures of different cars. He observes that the height of a car in one of the pictures is 5 cm. The scale used to draw the picture of the car is 1 cm : 11 in. Find the actual height of the car.

- a.  57 in.
- b.  55 in.
- c.  53 in.
- d.  58 in.

11. Length of a lake is 6 inches on map. The map of the lake has a scale of 1 inch : 30 miles. Find the actual length of the lake.

- a.  130 miles
- b.  230 miles
- c.  180 miles
- d.  160 miles

12. A bridge was supposed to be built across a river and the architect drew a 2 cm long bridge using a scale 1 cm : 4 miles on paper. Find the actual length of the bridge.

- a.  8 miles
- b.  10 miles
- c.  9 miles
- d.  11 miles

13. Scale of the couch shown is 1 inch :  $\frac{3}{4}$  feet. Find the actual height of the couch, if the height of the couch in the picture is 4 inches.

- a.  3 feet
- b.  5 feet
- c.  4 feet
- d.  None of the above



14. A 64 ft tall statue was carved and the sculptor used an 8 in. sketch of the statue as a blueprint. What scale did the sculptor use?

- a.  3 in. : 8 ft
- b.  1 in. : 1 ft
- c.  2 in. : 7 ft
- d.  1 in. : 8 ft

15. The height of a tree in a picture was 3 in. Find the actual height of the tree, if the scale of the picture was 1 in : 10 m.

- a.  10 meters
- b.  28 meters
- c.  32 meters
- d.  30 meters

16. The scale of a picture drawn is 4 in. : 5 ft. Find the actual length of the picture, if the length of the picture drawn is 8 in.

- a.  12 ft
- b.  11 ft
- c.  9 ft
- d.  10 ft

17. An artist drew a sketch of Westminster Abbey in London and it measured 40 cm. Find the scale used by him, if the chapel measures 40 meters.

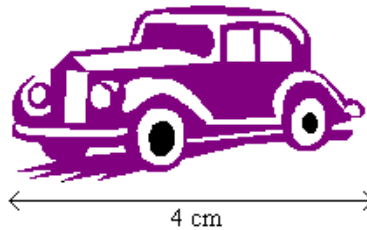
- a.  1 cm : 1.1 m
- b.  2 cm : 1 m
- c.  1 cm : 1 m
- d.  1 cm : 2 m

18. An artist uses a scale of 2 in. : 2.5 ft for a drawing. Find the length on the drawing, if the actual length is 20 ft.

- a.  18 in.
- b.  16 in.
- c.  15 in.
- d.  17 in.

19. A scale drawing of the car picture is 1 cm : 2 ft. Find the actual length of the car, if the length of the car picture is 4 cm.

- a.  9ft
- b.  8 ft
- c.  6 ft
- d.  None of the above



20. A map gives the length of rivers representing them with a scale of 5 cm : 35 mi. If one of the rivers on the map is of length 20 cm, then what is the actual length of the river?

- a.  147 mi
- b.  137 mi
- c.  140 mi
- d.  143 mi

**Answers:**

1a, 2b, 3b, 4a, 5c, 6d, 7a, 8a, 9d, 10b, 11c, 12a, 13a, 14d, 15d, 16d, 17c, 18b, 19b, 20c